

# LOPEN EYE

Lopen Parish Newsletter **DECEMBER 2015**



**MISTLETOE  
FAYRE**

See inside for  
pictures

**Merry  
Christmas!**

*Lopen Parish Council and all the team at Lopen Eye would like to wish everyone in Lopen a Merry Christmas and a Happy New Year!*

## **CHRISTMAS DATES FOR YOUR DIARY**

**Saturday 5th December - The Children's Pre-Christmas/ Advent Workshop**

From 2-4pm in the School Room. Ideas are being gathered, it should be fun.  
Names (and more ideas) to Angela 01460 240921.

**Wednesday 9th December from 10.30am - Coffee Stop - the last for 2015!**

We hope, on the day, to reach £150 to send to Bliss for babies born too small, too soon and too sick. Do come and share the hospitality in the School Room from 10.30am until 12 midday - coffee, cake/biscuits and refills all for £1.

**Sunday 13th December at 11 am - Family Communion**

**Wednesday 23rd December at 6.00pm - Carols by Candlelight**

**Friday 25th December at 10.30am - Christmas Communion**



# LOPEN PARISH COUNCIL



## THE CHAPEL

Although the parish council voted against the retrospective planning application for a two-bedroomed dwelling, the ward members of SSDC approved it.

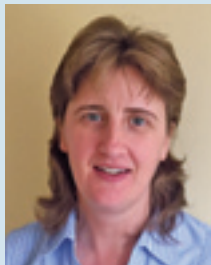
## LOPENHEAD EXPANSION

The application for judicial review to quash the planning permission for an enormous new factory on the unallocated land next to Probiotics' existing factory was heard in London on 3rd and 4th November, but the outcome is still awaited.

## TRAFFIC

We are about to commence our traffic surveys on Holloway and Merriott Road and shall report the outcome in due course.

## OUR NEW COUNCILLOR - JENNY FEENEY



Thank you for recently electing me to the Parish Council. I moved to Lopen over eighteen months ago. You may well have seen me around the village walking my dogs - a Border Collie, a Border Terrier and latterly, our new addition to the household, a wire haired standard Dachshund. In the short time I have lived

here there have been a number of new residents - I would like to encourage all to be involved and help represent the interests of the village. I look forward to seeing you at the Parish Council meetings and chatting with you as I get taken for a walk around the village by my Border Collie!

## EGWOOD

As reported last month, Lopen PC agreed the wording of the indemnity for any contamination problems relating to the site's previous use as a waste tip. However, the lease has still to be signed as Merriott has not yet approved it.

## THE BUDGET FOR 2016-2017

Teresa and Roger attended SSDC's training session on the precept and budget setting. Cuts in Government grants to local authorities will mean that we are facing the prospect of receiving less money in future and decisions may have to be made about cutting services or raising the precept. A draft budget will be presented at our December meeting but we shall not know what we are actually going to received from SSDC until the New Year.

## ROAD GRITTING AND SALT

If the weather turns bad over the winter period, there is a supply of grit/salt available to residents. If you need any please contact Parish Clerk Roger Gurner or Councillor Stephen Crane - contact details on the back page.

## NEXT LOPEN PARISH COUNCIL MEETING

The Parish Council will be meeting at the School Room at 7.00pm on Monday 7th December.



# A WARM WELCOME!

The picture that was missing in the last issue!



Phil and Susan Champion from Chard who have bought The Birches (formerly Luanshay) in Water Street.

We also have a new resident in The Old Chapel - a warm Lopen welcome to Fergus Daley.

# COATS FOR REFUGEES APPEAL

We are collecting coats, anoraks, waterproofs, padded gilets, etc. for [www.countrycoats2syria.org.uk](http://www.countrycoats2syria.org.uk) They are sent direct to refugee camps in Syria via Turkey with [www.syriarelieff.org.uk](http://www.syriarelieff.org.uk)  
**Please bring whatever you can spare by 5th December to Pitt Farmhouse, 41 Boozer Pit, Merriott.**

## Bus Services & Concessionary Fares Consultation

The County Council is facing major budget challenges. Falling funding and increasing demand for our services mean we have to review our future transport funding. This includes reviewing the bus services we subsidise and our concessionary fares policy.

As part of this we have launched two consultations on the future of our bus services and want you to **Have Your Say by Monday 11 January 2016.**

For full details of the proposed changes and to complete the surveys online, visit the web links below. Or phone 0300 123 2224 to have the surveys posted to you.

[www.somerset.gov.uk/concessionaryfareconsultation](http://www.somerset.gov.uk/concessionaryfareconsultation)

[www.somerset.gov.uk/bussubsidysurvey](http://www.somerset.gov.uk/bussubsidysurvey)



WWW.SOMERSET.GOV.UK



**THERE WILL BE NO LOPEN EYE IN JANUARY**





## LOPEN MISTLETOE FAYRE

The annual Mistletoe Fayre was a resounding success, despite the inclement weather, with a grand total of £2085.45 raised, which is divided between All Saints Church (for upkeep of the church and School Room) and this year's chosen charity: the Soldiers, Sailors, Airmen and Families Association (SSAFA). There were plenty of stalls loaded with many items including homemade cakes, savouries & preserves, plants, local hand made craft items, and of course the ever popular bottle tombola! The raffle did really well thanks to Paul's superb efforts and the first prize of the wonderful hen sculpture, kindly donated by George Hider, was won by Patrick from The Old Crown, Church Street. In all 23 prizes were generously donated.

A special thanks also to all the volunteers who gave their time to make produce, run the stalls and the refreshment area throughout the morning. A big thankyou to all who came and supported the fayre; it was particularly pleasing to see the Childrens Corner so popular. All in all it was another succesful event and no doubt SSAFA will be very pleased with their cheque for £1042.72.



### CHRISTMAS SHOEBOX APPEAL

Thank you all so much for the great effort that was made with the "shoe box" collection; a total of 24 boxes were sent from Lopen to join up with the 130 collected from other villages in the Benifice.

### BROADBAND SPEED SURVEY

The Broadband survey has now been distributed throughout the village to about 120 households, however only about 30 have responded. It would be good to get that number over 60 (50%) so that we can get a good idea of speeds and a consensus to see if we need to take further action by putting a case to the County and the various ISPs.



Our next meeting will be at

**2.00pm on Tuesday 8th December**

at

**The School Room**



This is our Annual Craft Event and this year we are going to make **Christmas cards**. Christine Hitchin from Stocklinch has been making her own Christmas cards for many years and has agreed to come along and share her talents with us by showing us how to make two typical designs. The materials will be provided although I will send out a small list of "tools" each of us will need on the day - usual things like scissors, Sellotape, etc.

There will be festive mince pies and mulled wine to get us in the spirit for the coming Christmas season.

**As always non-members are more than welcome, especially those new to the village.**

*For further information please telephone Margaret Linton : 241 162.*



## OBITUARY

John Osborne, owner of the farm shop in the village, recently lost his father Ron, who passed away at the age of 90. Some people in the village will remember him as he had moved here in 1932 and continued to live here until 1978 when he bought a fruit farm in Dowlish Wake. He went to school in Lopen and eventually worked for his uncle's fruit & veg business, delivering to the American camps in the war. Doing this job he met his future wife, Kath (who was a Land Army girl) and they had four children. Ron loved horse racing, even meeting the Queen Mother at Sandown! He was self-taught on piano & accordion and was never happier than when entertaining friends and family in the pub where everyone sang along. Ron will latterly be remembered with his faithful dog Rex.



## CONTACTS

Village website - [www.lopen.btck.co.uk](http://www.lopen.btck.co.uk)

### PARISH COUNCIL

Chairwoman	Teresa Sienkiewicz	241 363	tsloopenpc1@btinternet.com
Vice Chairman	Stephen Crane	241 412	scrane1@hotmail.co.uk
	Sarah Mason	249 219	sarahmason6@yahoo.com
	Nick Jones	241 643	nick.jones.lopenpc@outlook.com
	Barry Davolls	242 297	b.davolls.lopenpc@btinternet.com
	Jenny Feeney	419 569	jfeeneyloopenpc@gmail.com
Parish Clerk	Roger Gurner	249 253	clerktolopenpc@freeolamail.com
<b>DISTRICT COUNCIL</b>	Cllr Adam Dance	07767 224 213	adam.dance@southsomerset.gov.uk
	Cllr Crispin Raikes	07968 291 588	crispin.raikes@southsomerset.gov.uk
<b>COUNTY COUNCIL</b>	Cllr Christopher Le Hardy	01935 850 212	clehardy@somerset.gov.uk
<b>MEMBER of PARLIAMENT</b>	Marcus Fysh		marcus.fysh.mp@parliament.uk

### ALL SAINTS CHURCH

Benefice Office	Issy Welsh	73226	
Rector	Rev. Julia Hicks	76406	juliahicks1@gmail.com
Rector	Rev. Bob Hicks	76406	bobhicks66@gmail.com
Churchwarden	Angela Naunton Davies	240 921	nauntondavies@btinternet.com

### JUST WOMEN

Chairwoman	Lynn Benfield	929 205	lynn.ian@virgin.net
Treasurer	Zena Morgan	77259	zenam1@hotmail.co.uk
Secretary	Margaret Linton	241 162	margaretlinton79@yahoo.com

### POLICE CSO

Ceara Sturt	Dial 101		ceara.sturt@avonandsomerset.police.uk
-------------	----------	--	---------------------------------------

ask for PCSO 8340

### NEIGHBOURHOOD WATCH

Valerie Canton	242 751		mvcanton@talktalk.net
----------------	---------	--	-----------------------

### ARCHIVE & HISTORICAL GROUP

Nigel Potts	240 369		nigelpotts@talktalk.net
-------------	---------	--	-------------------------

### LOPEN EYE TEAM

Editor	Les Morton	391 574	lesmorton26@gmail.com
	Les Farris	242 254	leslifarris23@aol.com
	Michael Canton	242 751	mvcanton@talktalk.net
Proof-reading	Peter Little	242 474	peteralittle6@aol.com

## COFFEE MORNINGS at the SCHOOL ROOM

### DECEMBER DATE

**Wednesday 9th**  
10.30am to 12.00 midday

Only £1 for a hot drink (including refill) and a slice of homemade cake.

### JANUARY DATES

**Wednesdays 13th & 27th**  
10.30am to 12.00 midday

*Everyone welcome - including parents with young children.*